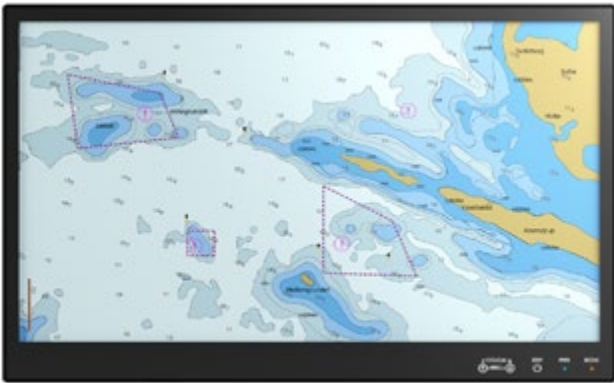


DuraPANEL 27" S-Line (Q370)

Wide Screen Panel PC for Radar & ECDIS

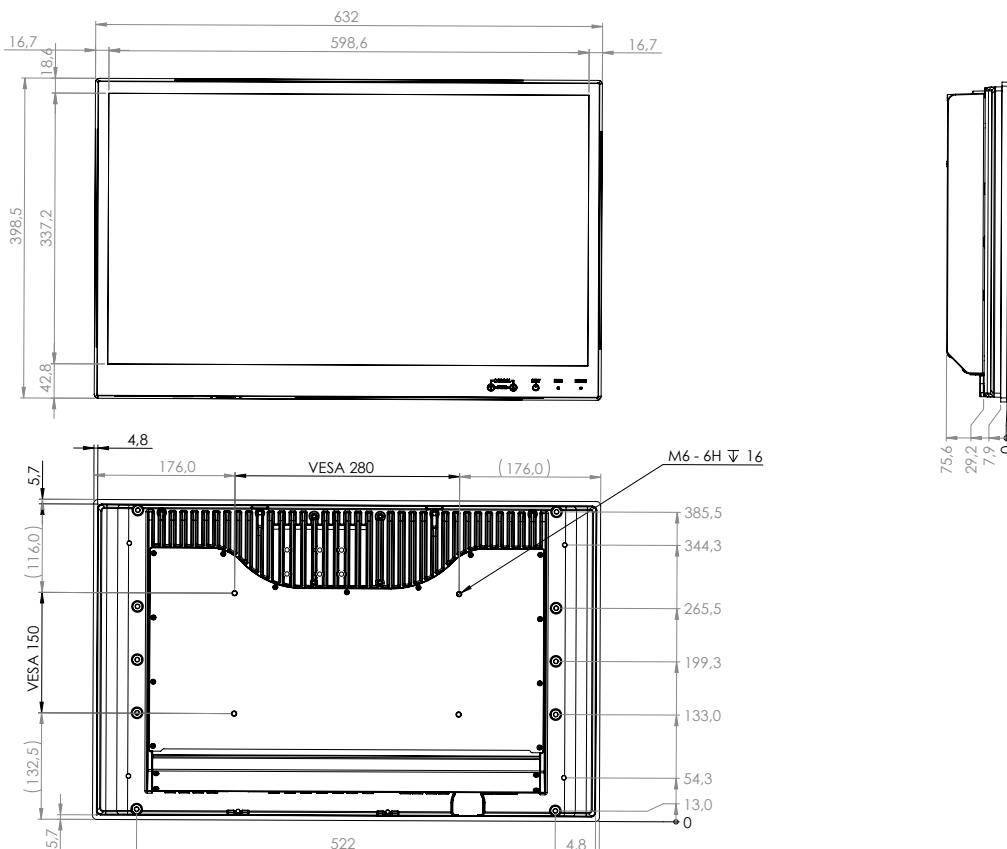


DuraPANEL 27" S-Line Panel PCs are designed for marine, naval and other demanding environments where reliable and durable hardware is required. Applicable for CAT 1 Radar.

The S-Line product family is an up-to-date and cost efficient design featuring super slim design, low weight, low power consumption and integrated touch keys for dimming on the front.

- ✓ 60945 Type Approval
- ✓ ECDIS Applications
- ✓ Radar Applications

Mechanical outline



Specifications

Display properties

Size	27" wide screen
Aspect ratio	16:9
Active area	597.60 x 336.15 mm
Luminance	350 cd/m ² (typ.)
Contrast	3000:1 (typ.)
Native resolution	1920 x 1080 (full HD)
View angle	89° (L/R/T/B) (typ.)
View distance	1070 mm minimum
Glass	Anti reflective and thermal toughened

Motherboard

Chipset	Intel® Q370E (8th/9th Gen.)
TPM	dTPM 2.0
Watchdog timer	1-255 steps by software programming
HW monitoring	Temperature, Voltage
Wake-on-LAN/PXE	Yes (WOL/PXE)
Power state	S3, S4, S5
On board graphics	Intel® UHD 630 (Core Processors)
On board graphics	Intel® UHD 610 (Pentium)
Graphics supports	DirectX 12, Open GL 4.5, Open CL 2.1

CPU options

Pentium G4400TE	2.4 GHz 2P cores, TDP 35W
Core i3-9100TE	2.2(3.2) GHz 4P cores, TDP 35W
Core i7-9500TE	3.2(3.6) GHz 6P cores, TDP 35W
Core i7-9700TE	3.1(3.8) GHz 8P cores, TDP 35W

Memory and storage

Memory	Up to 32 GB DDR4 RAM, SO-DIMM
Storage ports	SSD - 2 x 2.5" SATA 3.0, 1 x M.2
Storage size	128GB SSD up to state of the art

Power supply/power consumption

AC Power	100-240 VAC 50/60Hz (Nominal Marine)
DC Power	24 VDC (Nominal Marine) optional
AC/DC dual power	230 VAC + 24 VDC combined optional
Power(P)	<100W (VA)

Operator interface front panel

Power	Power on/off (press for 10 sec. to turn off)
Up	Adjust backlight up
Down	Adjust backlight down

OS options

Windows	Win 10 IoT Enterprise LTSC
---------	----------------------------

Input/output terminals

DisplayPort	2 x DP++ up to 3840 x 2160 @ 60Hz
Ethernet ATM	1 x Gbit LAN, Intel PHY i219LM ATM 12.0
Ethernet	1 x Gbit LAN, Intel i210AT
USB	4 x USB 3.2 Gen. 2 Type A
Audio Mic-in	1 x 3.5 mm Jack
Audio Line-out	1 x 3.5 mm Jack

Input/output options

Touch	P-Cap multi-touch
NMEA	Up to 2 x 4 isolated RS422 (NMEA comp.)
Serial Port	1 x RS232/422/485 (un-isolated)
Digital I/O	4 x Digital input + 4 x Digital output
USB	4 x USB 2.0
Ethernet	1 x Gbit LAN extra

Environmental

Operating temp.	- 15 to 55° C
Storage temp.	- 25 to 70° C
Humidity	8 to 95% RH (5 to 90% RH storage)
Protection	IP56 from front - IP22 from rear
Compass SD	180 cm (stand.) 115 cm (steer.)

Physical dimensions

Dimensions	632.0 (W) x 398.5 (H) x 75.6 (D) mm
Dimensions in box	760 (W) x 530 (H) x 170 (D) mm
Weight	15 kg 17 kg in box

Options & accessories

ECDIS	Colour calibration for ECDIS applications
Console bracket	Console mount bracket kit (10585-127)
Table bracket	Table mount bracket (10123-027)
Table bracket VESA	Table Mount VESA bracket (07317-000)
Wall bracket VESA	Wall mount VESA bracket (07317-001)
Buzzer	75-85 dBA
Removable SSD	2 x removable SSD trays on rear

Approvals & Certificates

Marine	IEC 60945 ed. 4 & IACS E10 rev. 9
ECDIS	IEC 61174 ed. 4
Radar/Navigation	IEC 62388 ed. 2 & IEC 62288 2021
Certificate	DNV EU RO MR

