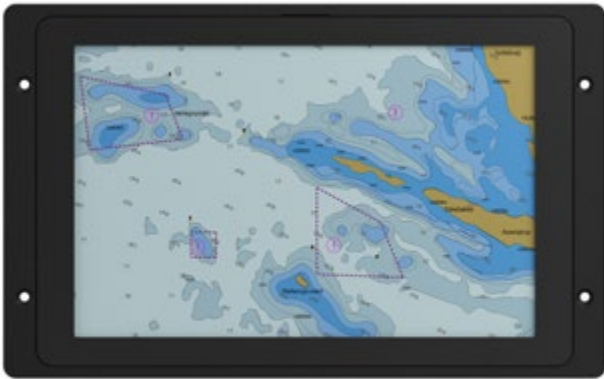


# DuraPANEL 10.1" G-Line

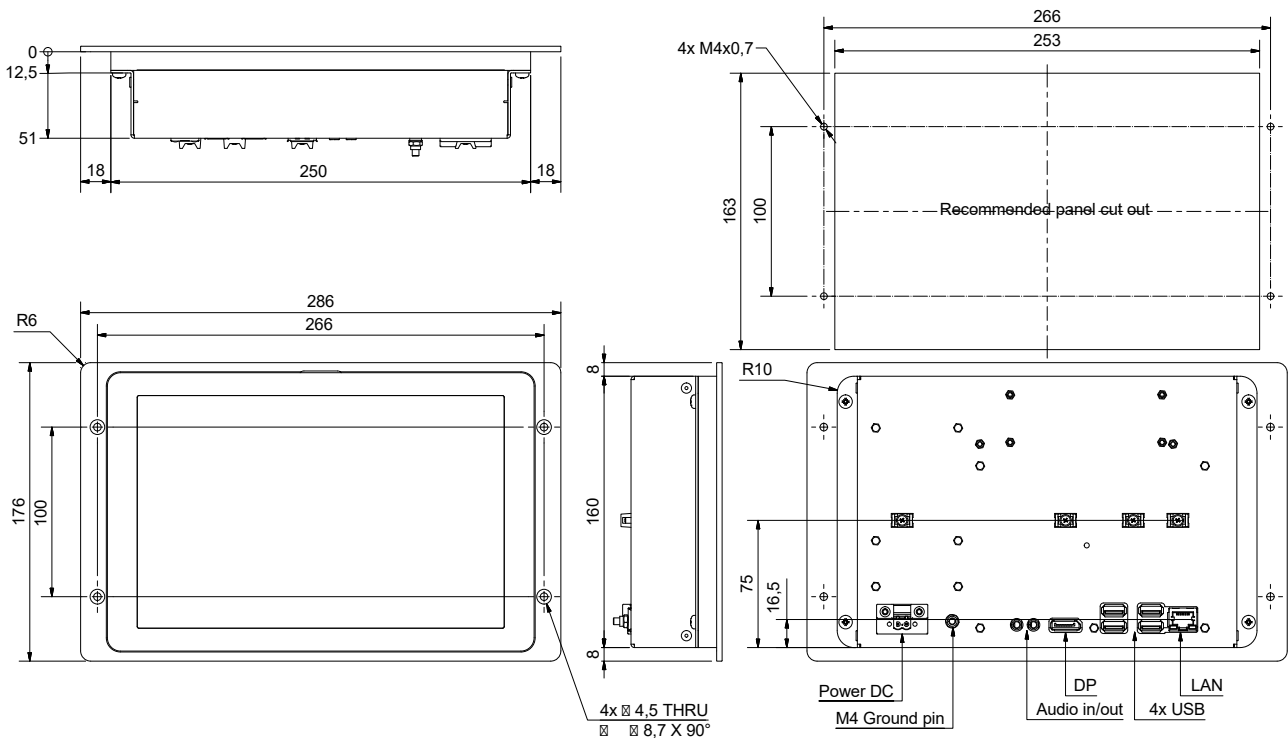
Panel PC for demanding environments



**DuraPANEL 10.1" G-Line** Panel PCs are designed for demanding environments where reliable and durable hardware is required.

The G-Line product family has a long track record in the market and features full glass front with integrated P-Cap multi touch.

## Mechanical outline



### Display properties

Size	10.1" wide screen
Aspect ratio	16:10
Active area	216.96 x 135.60 mm
Luminance	500 Cd/m <sup>2</sup>
Contrast	1300:1
Native resolution	1280 x 800
View angle	85° (L/R/T/B) typical
Glass	Anti reflection coated front glass
Touch	P-Cap multi touch

### Motherboard

Chipset	Intel® SoC solution
CPU	X5-E8000 1.04 GHz 4 cores, 4 threads
Watchdog timer	255 steps
H/W monitoring	Temperature, Voltage
Wake-on-LAN	Yes
On board graphics	Intel® HD Graphics, ref. to CPU
Graphics supports	DirectX 11.1 open GL 4.2 open CL 1.2

### Memory and storage

Memory	Up to 8 GB DDR3L RAM, SODIMM
Storage	Up to 1.9 TB SSD, SATA 3.0

### Power supply/power consumption

DC Power	24 VDC Dual galvanic isolated
Consumption	<20 W (VA)

### Operator control interface & OSD

Dimming	DDC/CI internal DisplayPort
Display properties	DDC/CI internal DisplayPort

### OS options

Windows	Windows 10 IoT
---------	----------------

### Input/output terminals

DisplayPort	1 x DP female
USB	4 x USB 3.0
RS serial port	1 x 9p D-sub female, 232/422/485
Ethernet	2 x Gbit LAN, Intel I211 AT
Audio line-in	1 x 3.5 mm Jack
Audio line-out	1 x 3.5 mm Jack

### Physical dimensions

Dimensions	286 (W) x 176 (H) x 66 (D) mm
Dimensions in box	360 (W) x 240 (H) x 130 (D) mm
Weight	1.4 kg 2.5 kg in box

### Environmental

Operating temp.	0 to 40° C
Storage temp.	- 20 to 60° C
Humidity	8 to 95% relative humidity
Protection	IP20 from front - IP22 from rear

### Approvals & Certificates

CE	EU Declaration of Conformity (03029-038)
----	--