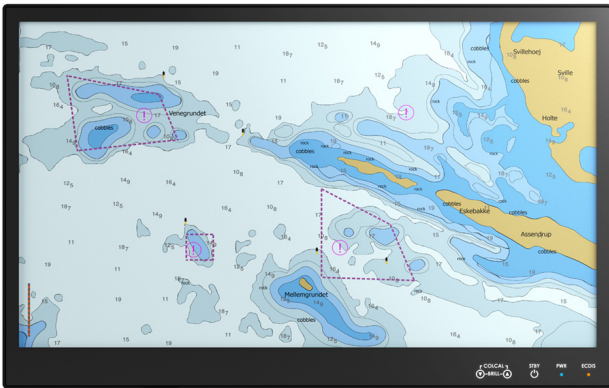


# DuraMON 27" S-Line

Wide Screen Monitor for Marine Applications

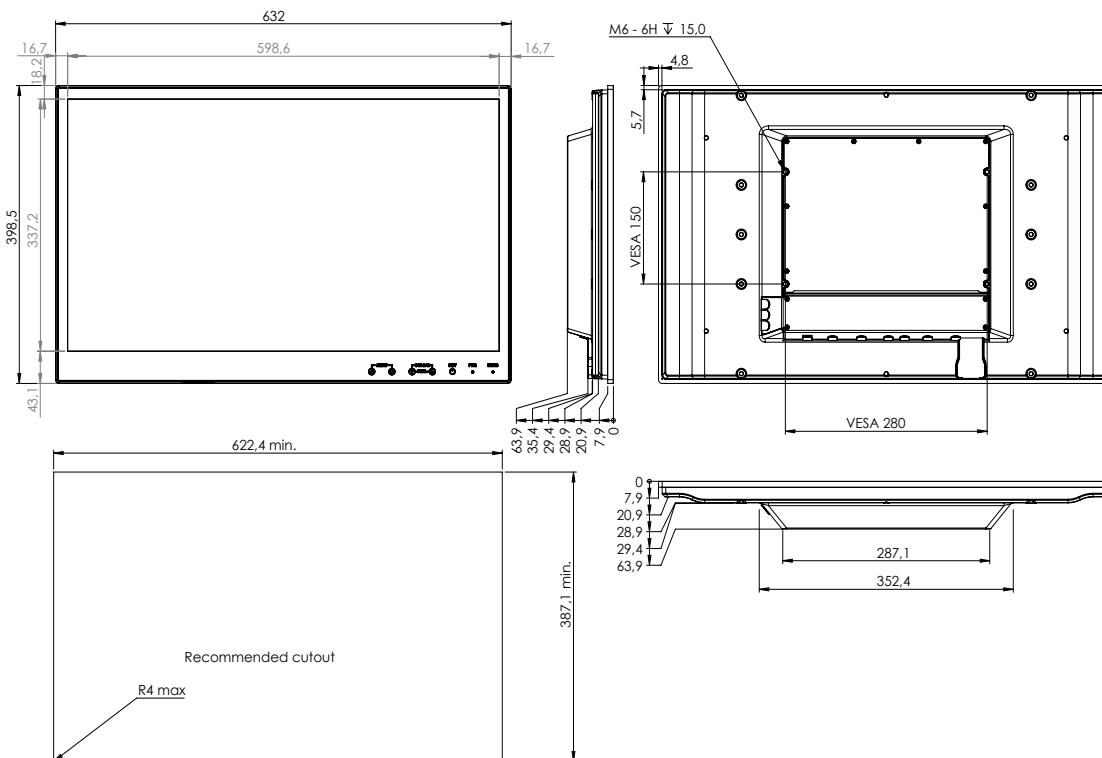


**DuraMON 27" S-Line** monitors are designed for marine, naval and other demanding environments where reliable and durable hardware is required.

The S-Line product family is an up-to-date and cost efficient design featuring super slim design, narrow bezel, low weight and low power consumption.

- ✓ 60945 Type Approval
- ✓ ECDIS Applications
- ✓ Radar Applications

## Mechanical outline



## Display properties

Size	27.0" wide screen
Aspect ratio	16:9
Active area	597.60 x 336.15 mm
Luminance	350 Cd/m <sup>2</sup> typical
Contrast	3000:1 typical
Native resolution	1920 x 1080 (Full HD)
View angle	89° (L/R/T/B) typical
View distance	1070 mm minimum
Glass	Anti reflective and thermal toughened

## Input/output terminals

DP video input	2 x DP 1.2
USB	1 x USB Type B, touch & virtual serial COM
AUX	1 x 2.5 mm jack, remote control - optional
Buzzer	Audio buzzer

## Operator control interface & OSD

Power stand by	On/Standby (press for 5 sec. for standby)
Up	Backlight-up
Down	Backlight-down
Select	Menu-select
Back	Menu-back

The above operator controls can be optional (On/Standby; Backlight; Menu).

## Power supply/power consumption

AC power	100-240 VAC 50/60Hz (Nominal Marine)
DC power	24 VDC (Nominal Marine) optional
AC/DC dual power	230 VAC + 24 VDC combined optional
Max. Consumption	35W (VA)

## Physical dimensions

Dimensions	632.0 (W) x 398.5 (H) x 63.9 (D) mm
Dimensions in box	760 (W) x 530 (H) x 190 (D) mm
Weight	10.0 kg
Weight in box	12.0 kg

## Environmental

Operating temp.	- 15 to 55° C
Storage temp.	- 25 to 70° C
Humidity	8 to 95% relative humidity
Protection	IP56 from front - IP22 from rear
Materials encl.	Sea water resistant Aluminum
Surface treatment	Black Powder coating RAL 9005

## Options & accessories

Touch	P-Cap multi touch
Console bracket	Console mounting kit (10585-027)
Table bracket	Table/ceiling bracket kit (10123-027)

## Approvals & Certificates

CE	Declaration of conformity (03029-087)
ECDIS	IACS E10 rev. 9 & IEC 60945 ed. 4
ECDIS	IEC 61174 ed. 4
Radar/Navigation	IEC 62388 ed. 2 & IEC 62288 2021
Certificate	DNV, NK, others on request
Compass SD	155 cm (stand.) 100 cm (steer.)