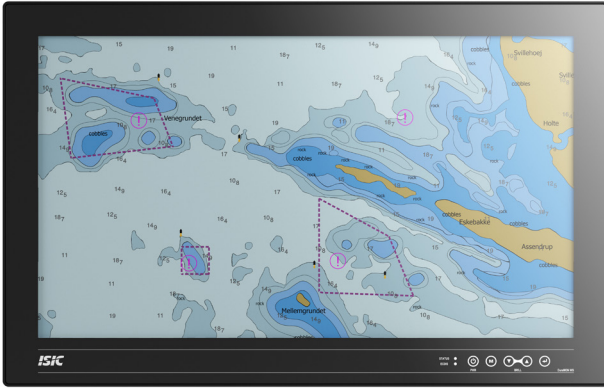


DuraMON 27" G-Line

Wide Screen Monitor for Radar & ECDIS



DuraMON 27" G-Line monitors are designed for marine, naval and other demanding environments where reliable and durable hardware is required. Applicable for CAT 1 Radar.

The G-Line product family has a long track record in the market and features full glass front with integrated touch keys for dimming and OSD navigation.

- ✓ 60945 Type Approval
- ✓ ECDIS Applications
- ✓ Radar Applications

Mechanical outline

DuraMON 27" G-Line

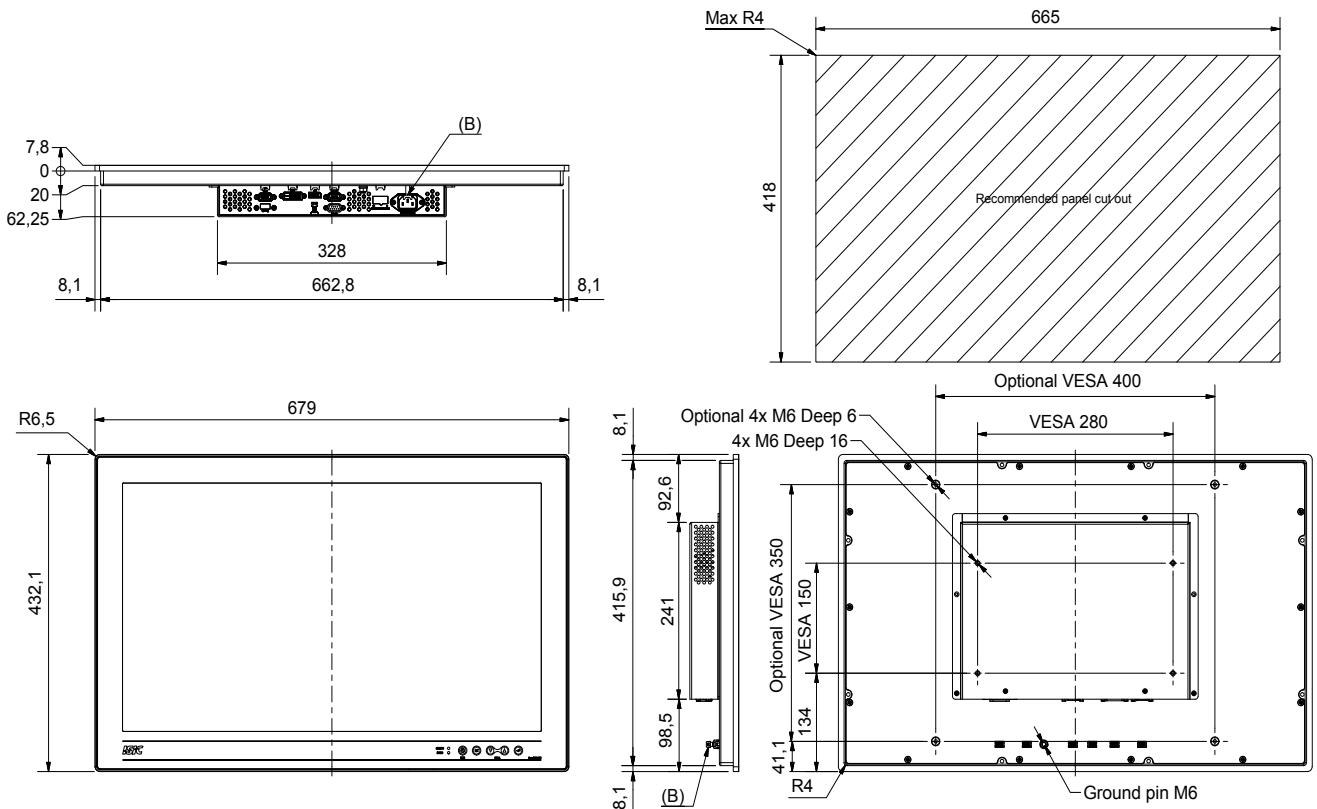


Table & wall bracket - ISIC PN 07317-000 & 07317-001

Changes may occur - for latest please contact sales@isic.dk

Specifications DuraMON 27" G-Line

Display properties

Size	27.0" wide screen
Aspect ratio	16:9
Active area	597.9 x 336.3 mm
Luminance	350 Cd/m2
Contrast	3000:1
Native resolution	1920 x 1080 (full HD)
View angle	89° (L/R/T/B) typical
Glass	Anti reflection coated front glass

Input/output terminals

RGB video input	1 x 15p D-sub female
DVI-D video input	1 x DVI-D Single link connector female
DP video input	1 x DP 1.2 connector female
Serial RS232	1 x 9p D-sub female - remote control
Serial RS422/485	Optional
USB	Optional 1 x USB 2.0 for touch sensor
Audio Buzzer	1 x built-in audio buzzer 75-85dBA / 1m

Operator interface front panel

Power	Power on/off (press for 10 sec. to turn off)
Menu	Get OSD menu
Up	Navigate menu / adjust backlight up
Down	Navigate menu / adjust backlight down
Enter	Navigate menu / enter set value

Power supply / power consumption

AC power	90 - 264 VAC 50 - 60Hz
DC power	18 - 36 VDC - optional
AC/DC dual power	90- 264 VAC & 18 - 36 VDC - optional
Typ. Consumption	30 W
Max. Consumption	35 W

Physical dimensions

Dimensions	679 (W) x 432 (H) x 70 (D) mm
Dimensions in box	850 (W) x 580 (H) x 180 (D) mm
Weight	15 kg
Weight in box	17 kg

Environmental

Operating temp.	- 15 to 55° C
Storage temp.	- 25 to 70° C
Humidity	8 to 95% relative humidity
Protection	IP65 from front - IP20 from rear
Materials encl.	Sea water resistant Aluminum
Surface treatment	Black Powder coating RAL 9005

Options & accessories

Touch	P-Cap multi touch
USB	1 x USB 2.0 for touch sensor
ECDIS	Colour calibration for ECDIS applications
RS 422/485	Optional extra COM port
Wall bracket	Wall mount VESA bracket (07317-001)
Table bracket	Table mount VESA bracket (07317-000)

Approvals & Certificates

CE mark	EN 61000-6-2 & EN 61000-6-4
Marine	IACS E10 rev. 8 & IEC 60945 ed. 4
ECDIS	IEC 61174 ed. 4
Radar/Navigation	IEC 62388 ed. 2 & IEC 62288 ed. 2
Certificate	DNV Mutual Recognition
Compass SD	220 cm (stand.) 135 cm (steer.)