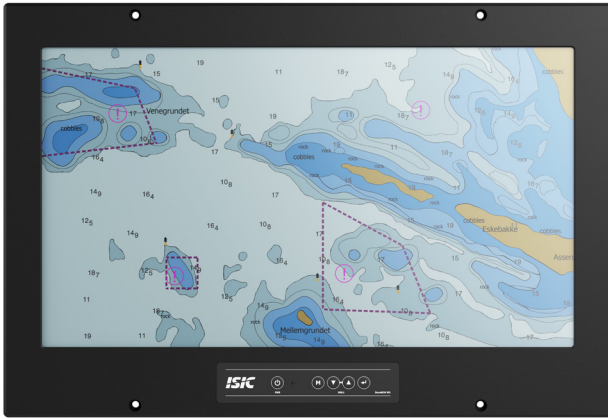


DuraMON 24" C-Line

Wide Screen Monitor for Radar & ECDIS



DuraMON 24" C-Line monitors are designed for marine, naval and other demanding environments where reliable and durable hardware is required. Applicable for CAT 2 Radar.

The C-Line product family has a long track record in the market and features integrated membrane keys for dimming and is mountable from the front.

- ✓ 60945 Type Approval
- ✓ ECDIS Applications
- ✓ Radar Applications

Mechanical outline

DuraMON 24" C-Line

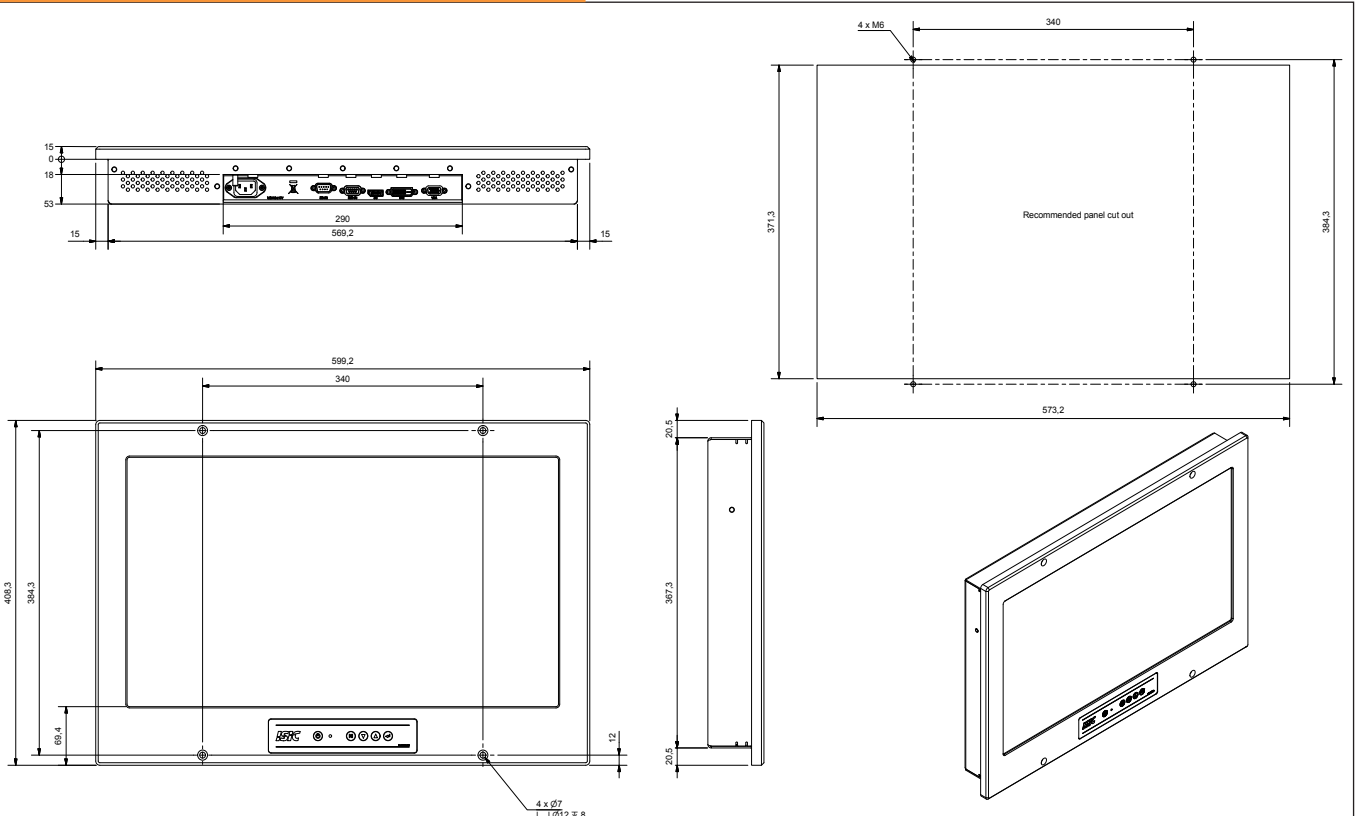


Table and wall bracket - ISIC PN 05292-000 & 05293-000

Changes may occur - for latest please contact sales@isic.dk

Specifications DuraMON 24" C-Line

Display properties

Size	23.6" wide screen
Aspect ratio	16:9
Active area	521.0 x 293.0 mm
Luminance	250 Cd/m2
Contrast	3000:1
Native resolution	1920 x 1080 (full HD)
View angle	89° (L/R/T/B) typical
Glass	Anti reflection coated front glass

Input/output terminals

VGA video input	1 x 15p D-sub female
DVI-D video input	1 x DVI-D Dual link connector female
DP video input	1 x DP 1.2 connector female
Serial RS232	1 x 9p D-sub female - remote control
Serial RS422/485	1 x 9p D-sub female, optional
Audio Buzzer	75 - 85 dB(A) 1m, Optional

Operator interface front panel

Power	Power on/off (press for 5 sec. to turn off)
Menu	Get OSD menu
Up	Navigate menu / adjust backlight up
Down	Navigate menu / adjust backlight down
Enter	Navigate menu / enter set value

Power supply / power consumption

AC power	90 - 264 VAC 50 - 60Hz
DC power	18 - 36 VDC, optional
Typ. Consumption	25 W
Max. Consumption	30 W

Physical dimensions

Dimensions	599 (W) x 408 (H) x 68 (D) mm
Dimensions in box	670 (W) x 490 (H) x 160 (D) mm
Weight	10 kg
Weight in box	12 kg

Environmental

Operating temp.	- 15 to 55° C
Storage temp.	- 25 to 70° C
Humidity	8 to 95% relative humidity
Protection	IP65 from front - IP20 from rear
Materials encl.	Seawater resistant aluminum
Surface treatment	Black Powder coating RAL 9005

Options & accessories

Touch	Not available
ECDIS	Colour calibration for ECDIS applications
RS 422/485	Optional extra COM port
Audio Buzzer	75 - 85 dB(A) 1m
Wall bracket	Wall mount bracket (05293-000)
Table bracket	Table/ceiling mount bracket (05292-000)

Approvals & Certificates

CE mark	EN 61000-6-2 & EN 61000-6-4
Marine	IACS E10 rev. 8 & IEC 60945 ed. 4
ECDIS	IEC 61174 ed. 4
Radar Navigation	IEC 62388 ed. 2 & IEC 62288 ed. 2
Certificate	DNV Mutual Recognition
Compass SD	215 cm (stand.) 140 cm (steer.)